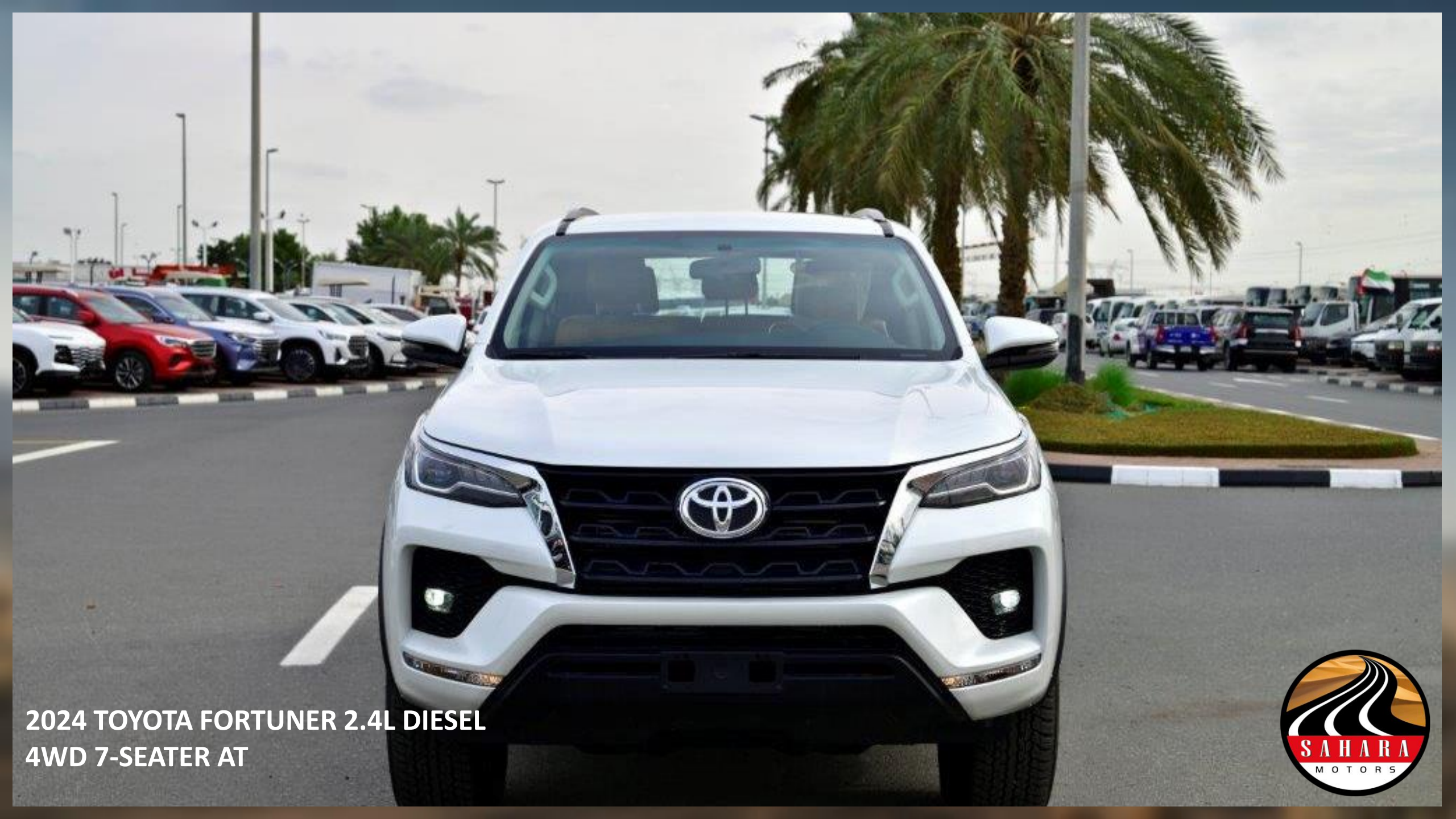




**WITH GREAT
POWER COMES**
Awesome
DEPENDABILITY!



Toyota
Fortuner



**2024 TOYOTA FORTUNER 2.4L DIESEL
4WD 7-SEATER AT**





**2024 TOYOTA FORTUNER 2.4L DIESEL
4WD 7-SEATER AT**





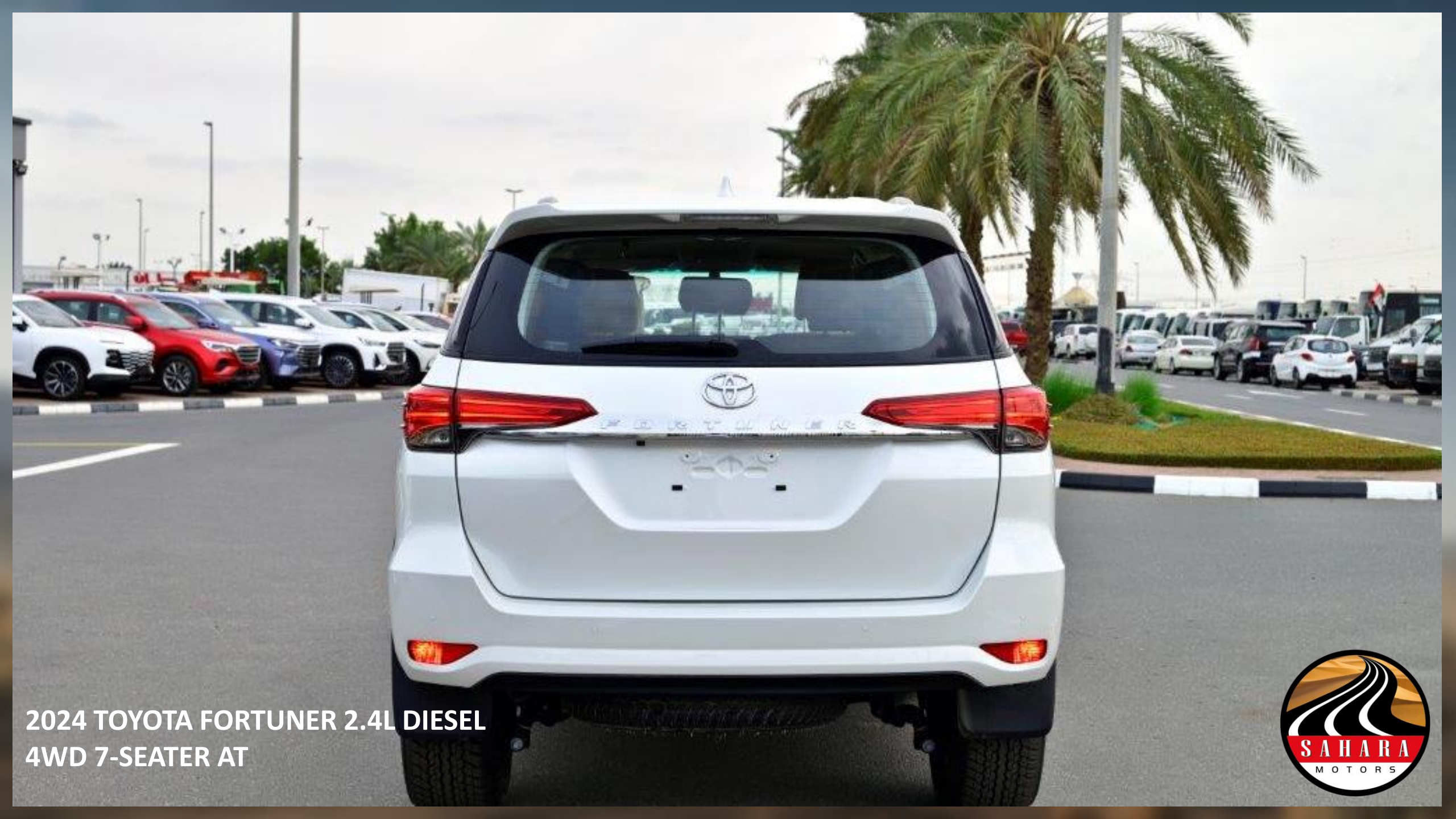
**2024 TOYOTA FORTUNER 2.4L DIESEL
4WD 7-SEATER AT**





**2024 TOYOTA FORTUNER 2.4L DIESEL
4WD 7-SEATER AT**





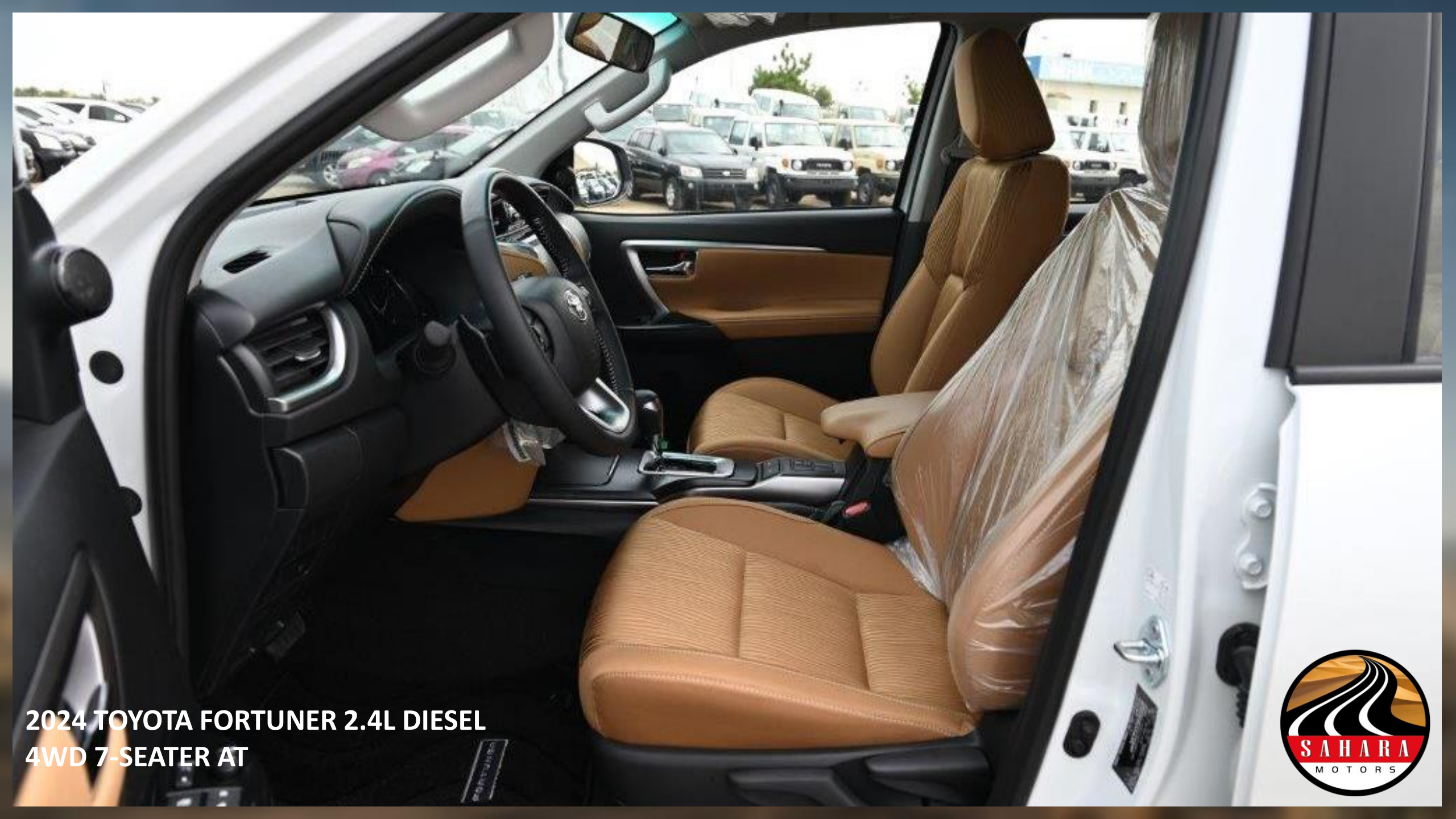
**2024 TOYOTA FORTUNER 2.4L DIESEL
4WD 7-SEATER AT**





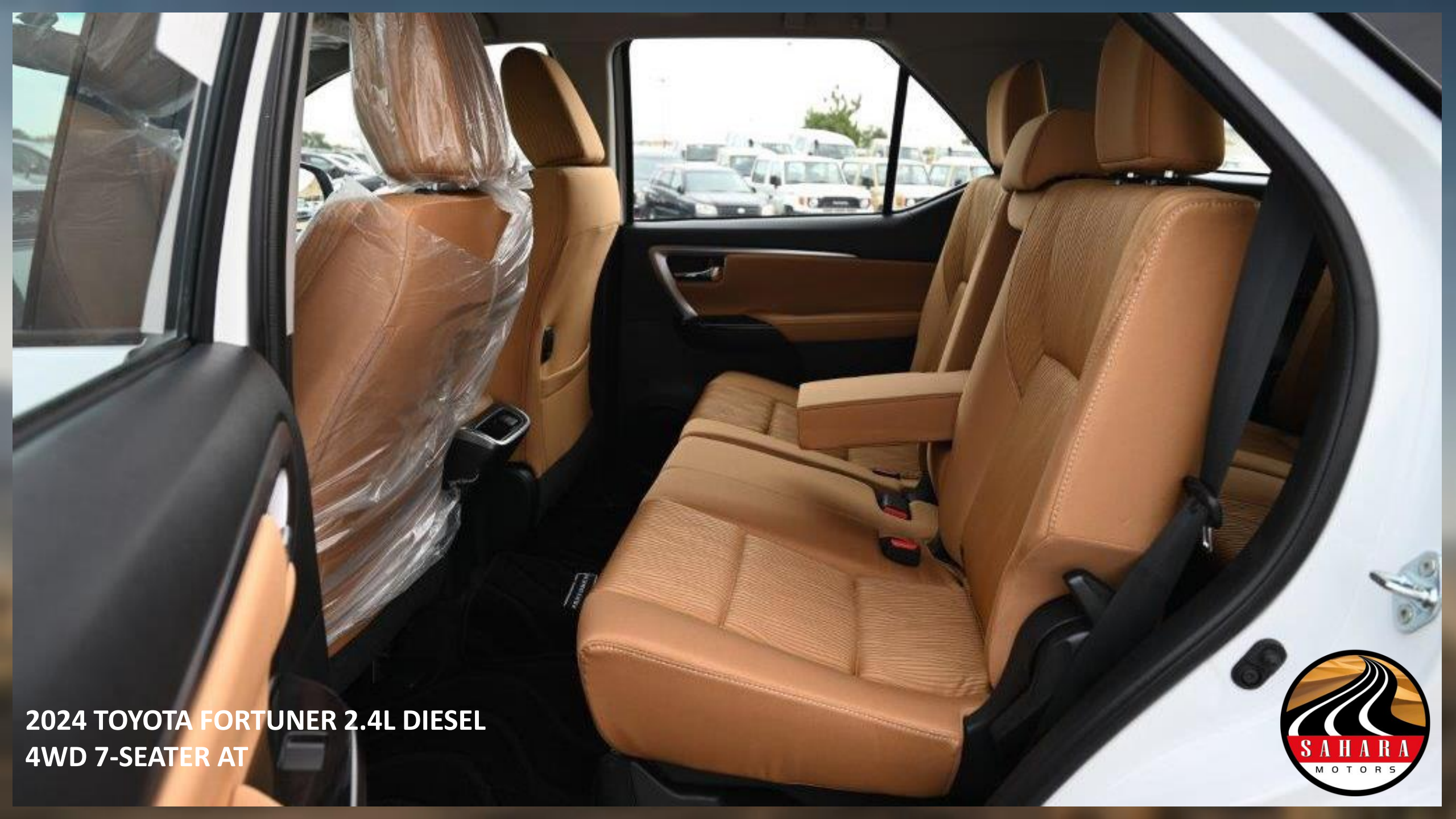
**2024 TOYOTA FORTUNER 2.4L DIESEL
4WD 7-SEATER AT**





**2024 TOYOTA FORTUNER 2.4L DIESEL
4WD 7-SEATER AT**





**2024 TOYOTA FORTUNER 2.4L DIESEL
4WD 7-SEATER AT**





**2024 TOYOTA FORTUNER 2.4L DIESEL
4WD 7-SEATER AT**





**2024 TOYOTA FORTUNER 2.4L DIESEL
4WD 7-SEATER AT**





**2024 TOYOTA FORTUNER 2.4L DIESEL
4WD 7-SEATER AT**





**2024 TOYOTA FORTUNER 2.4L DIESEL
4WD 7-SEATER AT**



HN2

TEMP

AUTO OFF

TEMP

DUAL A/C

LO *... 2LO

FRONT REAR

REAR

Detailed description: This is a close-up of the climate control system in a car. It features a central digital display showing 'LO *... 2LO' in blue. On either side are circular temperature controls with 'AUTO' and 'OFF' (left) and 'DUAL' and 'A/C' (right) settings. Below the display is a row of buttons for 'FRONT', 'REAR', fan speed, fan direction, and 'REAR'. A small green indicator light is visible below the display.

H2 H4 -PUSH- H4

Detailed description: A black gear shift knob with a blue accent. The knob has 'H2' on the left, 'H4' on the right, and '-PUSH-' in the center. The top of the knob also has 'H4'.

USB

Detailed description: A row of controls including a USB port with a white USB symbol, a circular button, and a rectangular button.

2024 TOYOTA FORTUNER 2.4L DIESEL
4WD 7-SEATER AT



2024 TOYOTA FORTUNER 2.4L DIESEL
4WD 7-SEATER AT



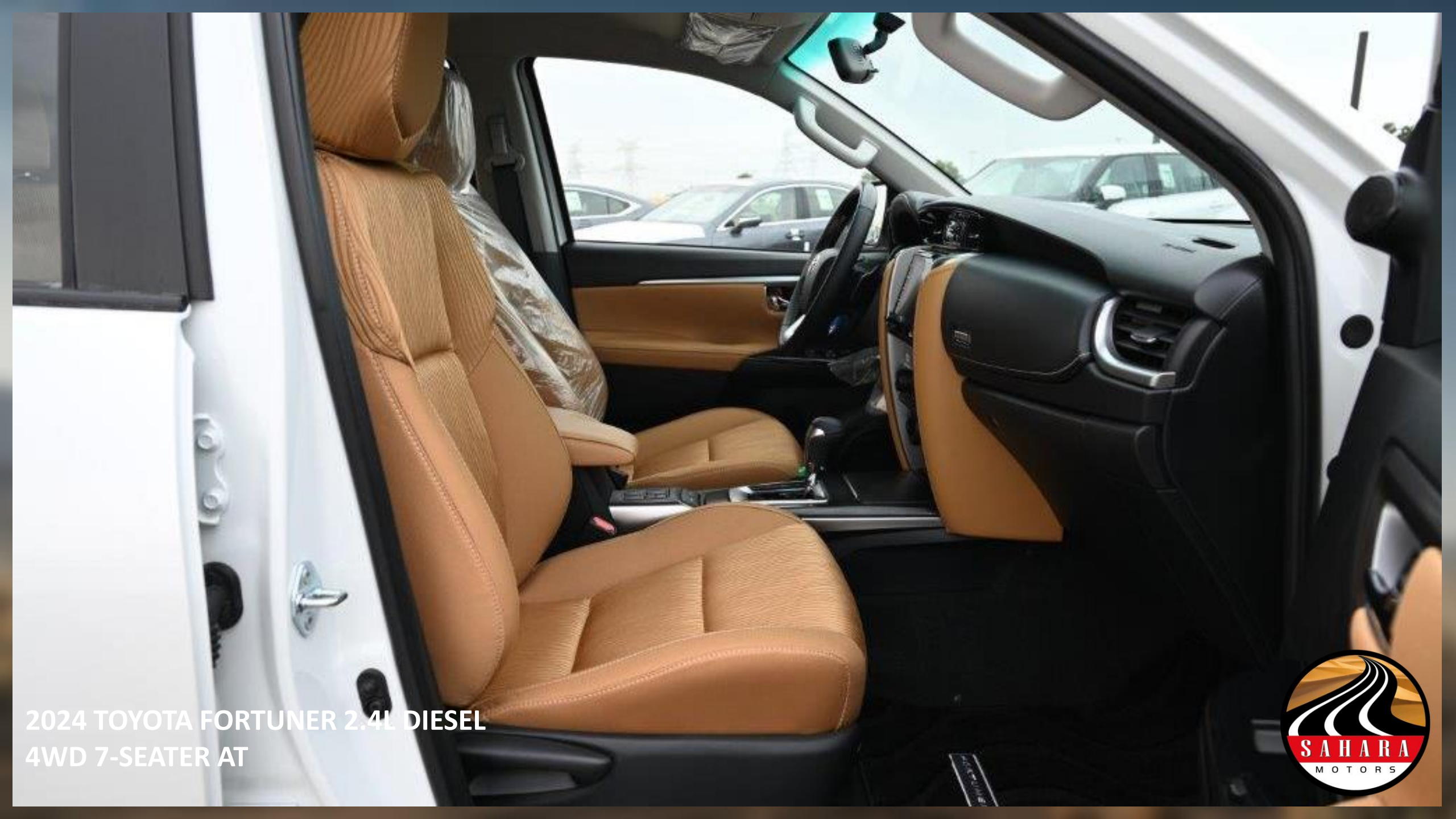
**2024 TOYOTA FORTUNER 2.4L DIESEL
4WD 7-SEATER AT**





**2024 TOYOTA FORTUNER 2.4L DIESEL
4WD 7-SEATER AT**





2024 TOYOTA FORTUNER 2.4L DIESEL
4WD 7-SEATER AT



2024 MODEL TOYOTA FORTUNER 2.4L DIESEL 7-SEATER AUTOMATIC

ENGINE:2GD-FTV - 4 CYLINDERS - DIESEL

OUTPUT (HP/RPM):147/5200

TORQUE (KG-M/RPM):40/3800

TRANSMISSION:6 SPEED AUTOMATIC

TERRAIN:4X4 PART-TIME

TYRES SIZE:265/65R17

FUEL TANK CAPACITY:80 L

NUMBER OF DOORS:5

FUEL EFFECIENCY (KM/L):14.4.

SEATING CAPACITY:7

CENTER DOOR LOCK

POWER STEERING

POWER WINDOWS

ANTI-LOCK BRAKE SYSTEM (ABS)

ELECTRONIC BRAKE-FORCE DISTRIBUTION (EBD)

ANTI-THEFT SYSTEM WITH ENGINE IMMOBILIZER

TIRE PRESSUE WARNING SYSTEM

REAR DIFFERENTIAL LOCK

DUAL AIR CONDITIONING

FLOOR MATS

FABRIC SEATS

AUDIO AM/FM/USB/AUX/BLUETOOTH

GLOVE BOX COOLER

LEATHER & WOOD-TRIMMED STEERING WHEEL

6 SPEAKERS

DUAL FRONT AIRBAGS

AUTO DISCONNECT DIFFERENTIAL

CRUISE CONTROL

VEHICLE STABILITY CONTROL (VSC)

KNEE AIRBAG FOR DRIVER

8" DISPLAY AUDIO- (APPLE CARPLAY/ ANDROID AUTO)

STEERING WHEEL CONTROL FOR AUDIO/TELEPHONE

OPTITRON SPEEDOMETER WITH 4.2" COLOR TFT DISPLAY

17" ALLOY WHEELS

WIRELESS DOOR LOCK

SIDE STEPS

CHROME RADIATOR GRILLE

LED HEADLIGHTS WITH DRL'S

CHROME BACK DOOR TRIM

CHROME DOOR HANDLES

REAR FOG LAMP

LED TAIL LIGHTS

DOOR MIRRORS - POWERED/RETRACTABLE

FRONT FOG LAMPS

ROOF SPOILER

FRONT & REAR PARKING SENSORS

ROOF RAILS

AUTO HEADLIGHT LEVELING

REAR VIEW CAMERA

TOYOTA FORTUNER

Are you interested in this

2024 Fortuner 2.4L DIESEL AT ?

CONTACT US NOW

Email: info@saharamotorsuae.com

Call/WhatsApp : +971 56 996 3661

+971 52 626 5109

+971 56 997 6522

+971 54 289 3440